



Cyngor Bwrdeistref Gogledd Gwent

Blaenau Gwent

County Borough Council

Short Breaks
for

t

Blaenau Gwent County Borough Council have made it a priority to promote better outcomes for children and families. One way of helping to achieve this is to provide a range of short break services for children and young people with disabilities. Some services are provided directly by Education, Children's Services, Sport and Leisure, Youth Services or through partnerships with other organisations like Barnardo's. Our Children and Young People Partnership also fund a range of services for disabled children under their Families First work.

The statement is provided as a guide only and more information can be obtained about services by using the contact information at the end.

***Barnardo's is
an excellent
service with
great support
workers.***

Short Breaks, sometimes called respite, provide parents and carers who have children and young people with disabilities with a break from caring for a few hours in the day or an overnight stay. Short breaks can help prevent family breakdowns and ease the stresses of everyday family life. There are a range of services that include after school activities, community based play, sport and leisure.

Children and young people with disabilities between the age of 0 and 18 to enable them to:

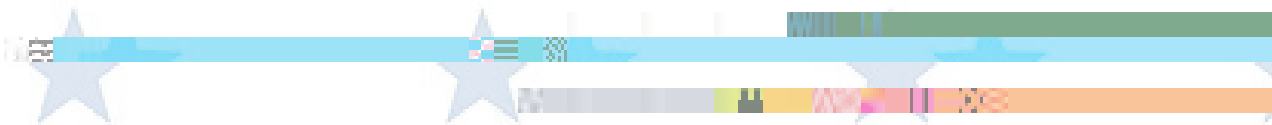
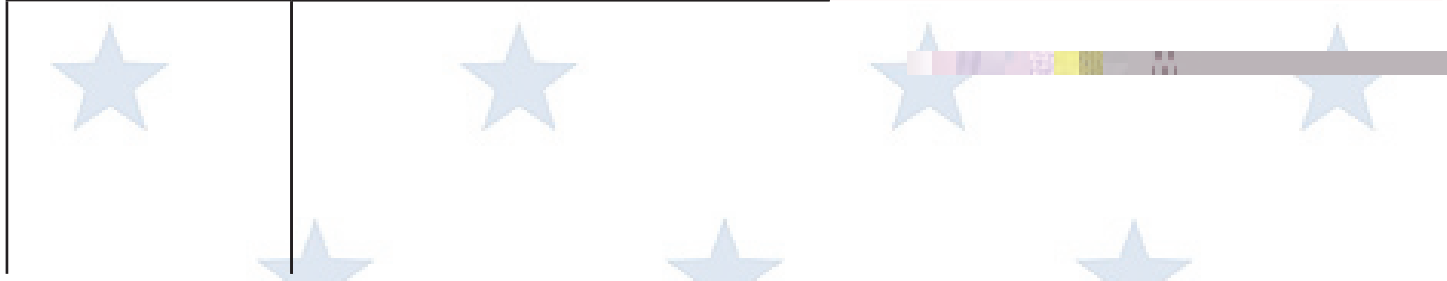
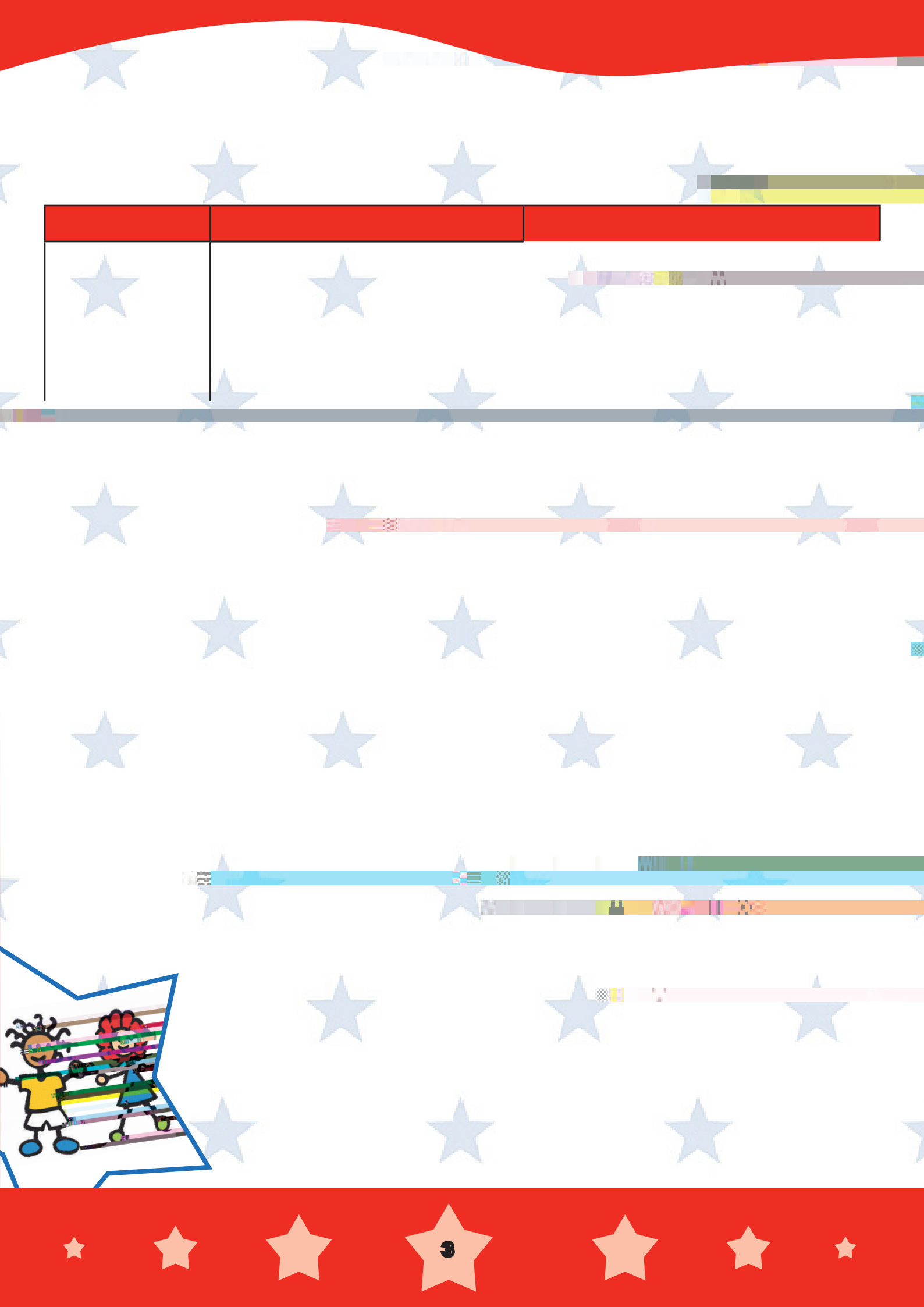
- Enjoy a fun and positive time away from their parents or carers.
- Develop friendships and socialise.
- Take part in inclusive activities with non-disabled children.
- Develop new skills and abilities.

Parents and carers with caring responsibilities for children and young people aged 0 to 18. The range of services available should provide:

- Choice.
- Flexibility.

Any parent or carer who has a child with a disability living in Blaenau Gwent County Borough will be able to access one or more services depending on their child's needs and their capacity to meet those. Apart from universal services most services will require an assessment to be carried out. The purpose of an assessment will be to identify





Couldn't be happier with Support from Leisure. It aids my child's confidence and independence.

Additional Needs Referral Scheme

The Additional Needs Referral Scheme is available to support children with an emerging or diagnosed condition to attend a pre-school setting alongside their peers. Support may be offered in a number of ways to enable the child to engage in a quality preschool experience.

Out of School Childcare

Throughout the borough there are before school, after school and holiday clubs for school aged children that offer childcare outside of the school day. For more detailed information contact the Family Information Service on freephone 08000 32 33 39. www.blaenau-gwent.gov.uk/5593.asp

Families First

The Families First programme is funded by the Welsh Government to help families who are facing

Families with complex issues may need lots of support; however, some families may require help to overcome smaller problems to stop them getting worse.

people. The disability element of Families First includes a specialist team who engage with and undertake assessments for families of disabled children who are in need of support. The Families First Disability team work as part of the 'Community Hubs' offering Team Around the Family packages which draw in expertise and involvement from all types of services who may be involved with your family e.g. schools, health professionals, social workers.

In addition Families First also support children to access childcare provision through a 'Supported Places Scheme'. Diagnosis is not a requirement to access the service. However, an

cost of childcare for disabled children and young people. The Supported Places scheme is open to all families of children with a disability via a simple request for services form. A member of the Families First Disability Team can provide assistance in completing this form with your family.

The service is supported with access to necessary training to ensure the best experience for all children. Extra support for families can be provided via informal meetings for parents and carers. This gives time to socialise with peers and gain more knowledge of what is available to them as well as having a voice regarding their services.

If you would like more information on Families First please contact the Family Information Service:



Family Information Service

impartial service offering information, advice and guidance on a whole range of services relating to children and young people and their families.

There is up-to-date information relating to:

Play

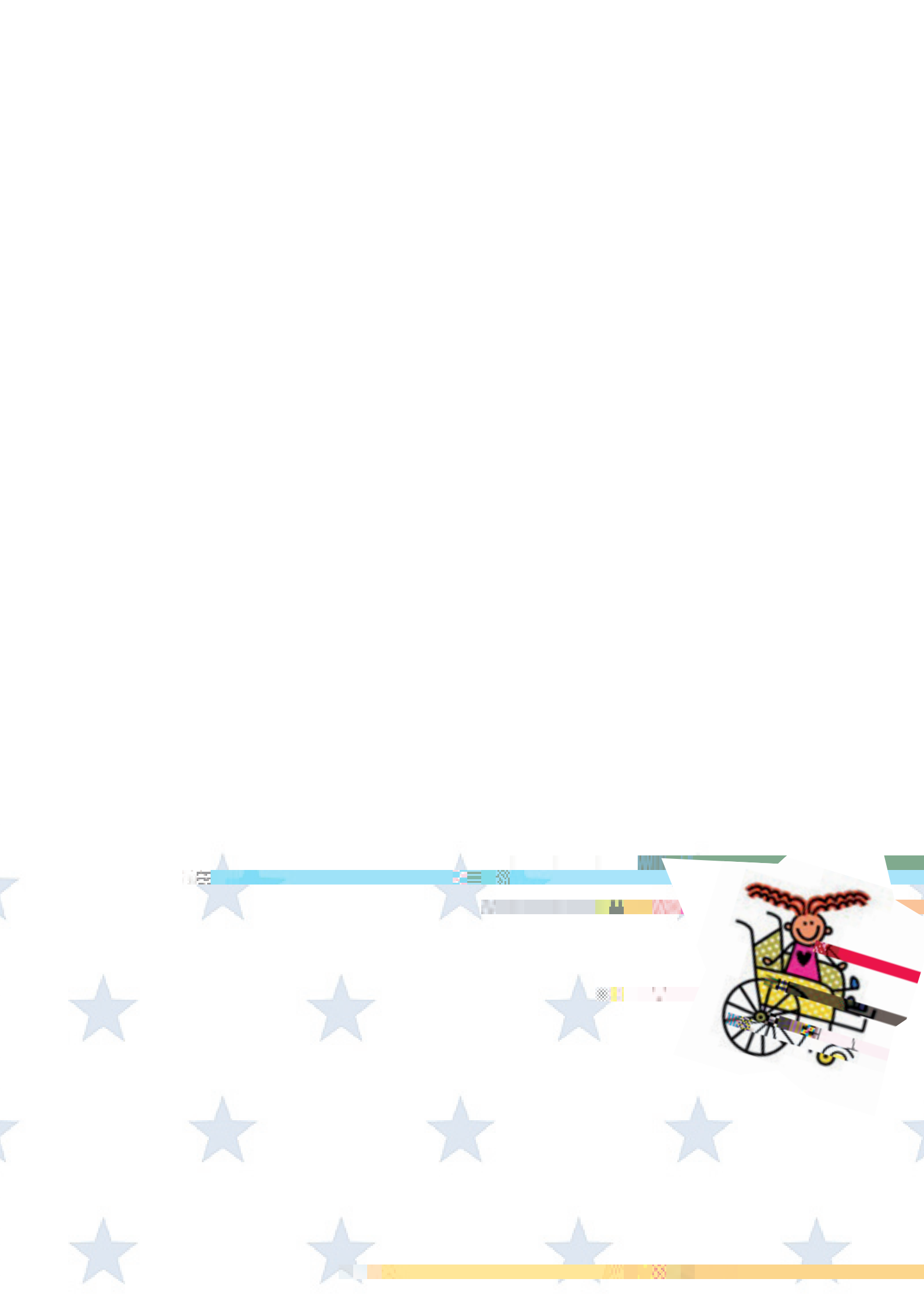
Childcare

Youth Clubs

Parenting







Blaenau Gwent County Borough Council would like to express their gratitude for the help and support in developing this statement provided by parents who themselves have disabled children. To prepare this statement, consultation questionnaires were distributed in July 2015 to all children with a disability via local schools.

The majority of feedback we received was extremely positive, particularly regarding the retained carer's project and Barnardo's Support with Leisure. All quotes used within this statement are from the most recent consultation questionnaires.

support during their teenage years, to help them in their transition to adulthood. This is an area of the service which we and our partners are keen to continually develop and improve.

We would welcome any feedback from other parents and carers about the statement and how it can be improved.

Please send comments to:

**Sally Indge
Children's Services
Family Resource Centre
Beaufort Road
Ebbw Vale
NP23 5LH**

E-mail: sally.indge@blaenau-gwent.gov.uk

Tel: (01495) 355760



April 2016